

CAN YOU FIND THE KEY?

TOP SECRET

The GREAT MEASUREMENT MYSTERY



ESCAPE PROFESSOR POLYGON'S LAB!



PROFESSOR POLYGON LABORATORIES



πr^2



A Mini Math Escape Challenge for Kids

STORY + INSTRUCTIONS + CODE CHART



THE STORY

Oh no!





Professor Polygon accidentally locked himself inside his laboratory while testing his newest measurement machine.

The only spare key is hidden somewhere in the lab...




Solve the puzzles, collect the letters, and use them to discover where the spare key is hidden before time runs out!

INSTRUCTIONS

- 1  Solve each puzzle.
- 2  Find your answer on the code chart.
- 3  Write down the matching letter.
- 4  Use the letters to solve the final mystery word.



 **OPTIONAL CHALLENGE:**
Can you finish in under **10 minutes?**

CODE CHART


A	B	C	D	E	F	G	H	I	J	K	L	M
18	23	7	2	12	13	5	21	8	24	9	26	20
N	O	P	Q	R	S	T	U	V	W	X	Y	Z
3	17	22	19	4	6	11	10	25	1	14	16	15

SECRET LETTER TRACKER

- Puzzle #1 Answer: _____ → Letter: _____
- Puzzle #2 Answer: _____ → Letter: _____
- Puzzle #3 Answer: _____ → Letter: _____
- Puzzle #4 Answer: _____ → Letter: _____

FINAL MYSTERY WORD

Use your secret letters more than once if needed.

 *Hint: It's somewhere cold!*



PUZZLE #1

THE PATTERN LOCK



Professor Polygon's security lock only opens when the pattern is completed correctly.

Look at the number pattern below.

0 → 1 → 1 → 2 → 3 → 5 → 8 → ?

What number comes next?

Answer: _____



Need a hint?
This is a
Fibonacci
sequence!

Dress Up
Your Writing



SOLVE THE CODE

Use the code chart on Page 2 to find your secret letter.



PUZZLE #2



MARSHMALLOW MEASUREMENTS



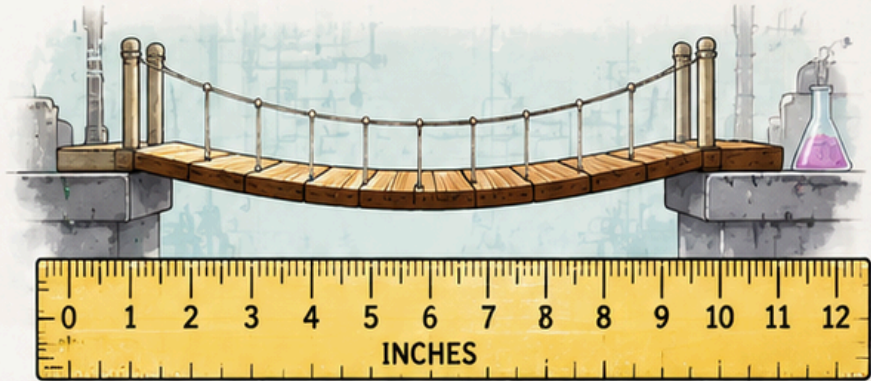
Professor Polygon invented a silly unit called the **Marshmallow-Step**.



1 Marshmallow-Step = 3 inches

A tiny lab bridge is **12** inches long.

How many **Marshmallow-Steps** long is the bridge?



$$12 \div 3 = \underline{\hspace{2cm}}$$



SOLVE THE CODE



Use the code chart on Page 2 to find your secret letter.



PUZZLE #3

BEAKER BALANCE

Professor
Polygon

The lab's mystery liquid must be divided **evenly** before it explodes into fizzy foam!

6 beakers hold **72** drops of mystery liquid.

How many drops are in **ONE** beaker?

BURP!
FIZZY
DANGER!



Dress Up
Your Writing

$$72 \div 6 = \underline{\hspace{2cm}}$$

SOLVE THE CODE

Use the code chart
on Page 2 to find
your secret letter.



Measure.
Calculate.
Solve!



PUZZLE #4

THE SECRET LAB MAZE

Stay sharp,
young scientist!



Professor Polygon dropped clues throughout the laboratory maze. Only the **CORRECT PATH** leads to the final secret letter.

BE CAREFUL!
Wrong turns lead to dead ends!



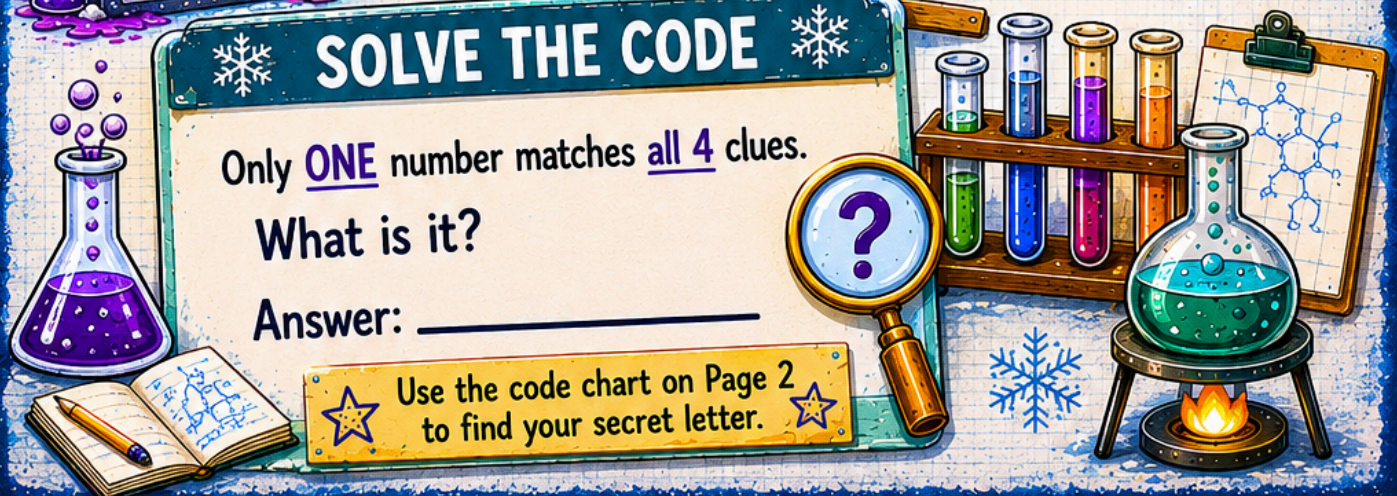
SOLVE THE CODE

Only ONE number matches all 4 clues.

What is it?

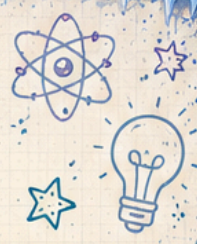
Answer: _____

★ Use the code chart on Page 2 to find your secret letter. ★






BONUS INVENTOR CHALLENGE




INVENT YOUR OWN UNIT OF MEASUREMENT

Professor Polygon needs your help with his next invention.
Create your own brand-new unit of measurement!




 My measurement is called: _____

 It measures: _____

 One unit equals: _____

 People would use it to measure: _____

 Draw or describe your invention: _____



NEED IDEAS?

Here are a few to get your brain buzzing!

- ★ **"GLOW-LENGTH"**
A Glow-Length measures how bright something glows in the dark.
- ★ **"SEED-O-METER"**
A Seed-O-Meter measures how many seeds are in a melon.
- ★ **"SPLASH-SCALE"**
A Splash-Scale measures how big a splash is when something hits water.

OPTIONAL EXTRA PROMPT



Write a short advertisement for your invention.





**DON'T LOOK ANY FURTHER
IF YOU DON'T WANT TO KNOW THE ANSWER!**

FINAL REVEAL!

FREEZER



You solved the mystery!

Professor Polygon hid the spare key inside the **FREEZER** to keep it "cool."

Thanks to your clever math skills, Professor Polygon is finally free from the laboratory!



★ OFFICIAL ★

JUNIOR MATH DETECTIVE

AWARDED TO:

FOR SOLVING:

The Great Measurement Mystery



DATE: _____

SIGNED: _____

PROFESSOR POLYGON

Prof. Polygon





Dress Up
Your Writing

Thank you for downloading this resource!
I hope it makes writing feel like play for your students. 🤍



TERMS OF USE

✓ You May:

- Print and copy this resource for use with your own students.
- Use in your classroom, homeschool, or co-op setting.
- Share it during live lessons with your own students (in person or virtual).

🚫 You May Not:

- Redistribute or resell this resource in any form.
- Upload the digital file to public websites, shared drives, or forums.
- Claim this work as your own.

☀️ Sharing Policy

If you'd like to share this activity with others, please do so by directing them to my Teachers Pay Teachers store or my website DressUpYourWriting.com so they can download their own copy.

📖 Find More Resources

Looking for more fun ways to inspire young writers?

- Visit my TPT Store for games, prompts, and printables.
- 📷 Follow along on Instagram [@dressupyourwriting](https://www.instagram.com/dressupyourwriting) for Friday Word Sparks, National Day writing prompts, and creative collabs!
- Explore the DUYW site for free activities, interactive tools, and inspiration!

✉️ Contact

Questions or feedback? I'd love to hear from you!

✉️ hello@dressupyourwriting.com

🌐 Visit: DressUpYourWriting.com

☀️ A Note About Cursive

You may notice the use of cursive script in the headers of some printables. This was intentional! While all main instructions and activity text are printed for accessibility, we believe it's valuable for students to be regularly exposed to cursive. It builds visual familiarity and supports reading development – even if they're not writing in cursive yet!

CAN YOU FIND THE KEY?

The GREAT MEASUREMENT MYSTERY

TOP SECRET

ESCAPE PROFESSOR POLYGON'S LAB!

Dress Up Your Writing



A Mini Math Escape Challenge for Kids

PAGE 2

STORY + INSTRUCTIONS + CODE CHART



THE STORY

Oh no!
Professor Polygon accidentally locked himself inside his laboratory while testing his newest measurement machine.
The only spare key is hidden somewhere in the lab...



TIME IS TICKING!

Solve the puzzles, collect the letters, and use them to discover where the spare key is hidden before time runs out!

INSTRUCTIONS

- 1 Solve each puzzle.
- 2 Find your answer on the code chart.
- 3 Write down the matching letter.
- 4 Use the letters to solve the final mystery word.



OPTIONAL CHALLENGE:
Can you finish in under 10 minutes?

CODE CHART

A	B	C	D	E	F	G	H	I	J	K	L	M
18	23	7	2	12	13	5	21	8	24	9	26	20
N	O	P	Q	R	S	T	U	V	W	X	Y	Z
3	17	22	19	4	6	11	10	25	1	14	16	15

SECRET LETTER TRACKER

Puzzle #1 Answer: _____ → Letter: _____
 Puzzle #2 Answer: _____ → Letter: _____
 Puzzle #3 Answer: _____ → Letter: _____
 Puzzle #4 Answer: _____ → Letter: _____

FINAL MYSTERY WORD

Use your secret letters more than once if needed.

Hint: It's somewhere cold!

PUZZLE #1

THE PATTERN LOCK

Professor Polygon's security lock only opens when the pattern is completed correctly.

Look at the number pattern below.

0 → 1 → 1 → 2 → 3 → 5 → 8 → ?

What number comes next?

Answer: _____

Need a hint?
This is a Fibonacci sequence!



SOLVE THE CODE

Use the code chart on Page 2 to find your secret letter.

PUZZLE #2

MARSHMALLOW MEASUREMENTS

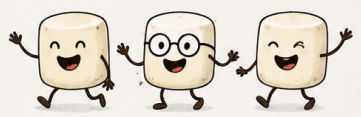
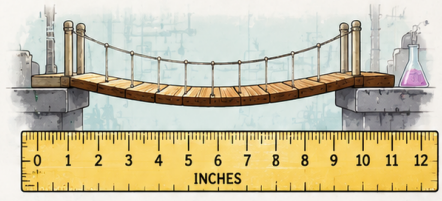
Professor Polygon invented a silly unit called the **Marshmallow-Step**.

1 Marshmallow-Step = 3 inches

A tiny lab bridge is 12 inches long.

How many Marshmallow-Steps long is the bridge?

12 ÷ 3 = _____



SOLVE THE CODE

Use the code chart on Page 2 to find your secret letter.



PUZZLE #3

BEAKER BALANCE



The lab's mystery liquid must be divided **evenly** before it explodes into fizzy foam!

6 beakers hold 72 drops of mystery liquid.
How many drops are in **ONE** beaker?



BURP!
FIZZY DANGER!

$72 \div 6 = \underline{\hspace{2cm}}$

SOLVE THE CODE

Use the code chart on Page 2 to find your secret letter.



Measure.
Calculate.
Solve!



PUZZLE #4

THE SECRET LAB MAZE



Professor Polygon dropped clues throughout the laboratory maze. Only the **CORRECT PATH** leads to the final secret letter.

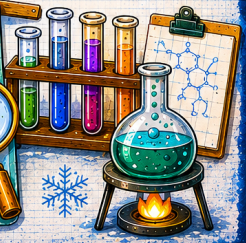
BE CAREFUL!
Wrong turns lead to dead ends!



SOLVE THE CODE

Only **ONE** number matches all 4 clues.
What is it?
Answer: _____

Use the code chart on Page 2 to find your secret letter.



BONUS INVENTOR CHALLENGE

INVENT YOUR OWN UNIT OF MEASUREMENT

Professor Polygon needs your help with his next invention.
Create your own brand-new unit of measurement!



My measurement is called: _____

It measures: _____

One unit equals: _____

People would use it to measure: _____

Draw or describe your invention: _____

NEED IDEAS?

Here are a few to get your brain buzzing!

- ★ **"GLOW-LENGTH"**
A Glow-Length measures how bright something glows in the dark.
- ★ **"SEED-O-METER"**
A Seed-O-Meter measures how many seeds are in a melon.
- ★ **"SPASH-SCALE"**
A Splash-Scale measures how big a splash is when something hits water.

OPTIONAL EXTRA PROMPT

Write a short advertisement for your invention.



DON'T LOOK ANY FURTHER IF YOU DON'T WANT TO KNOW THE ANSWER!

FINAL REVEAL!

FREEZER



You solved the mystery!
Professor Polygon hid the spare key inside the FREEZER to keep it "cool."
Thanks to your clever math skills, Professor Polygon is finally free from the laboratory!



OFFICIAL JUNIOR MATH DETECTIVE

AWARDED TO: _____

FOR SOLVING: _____

The Great Measurement Mystery

DATE: _____

SIGNED: _____

PROFESSOR POLYGON

Prof. Polygon

